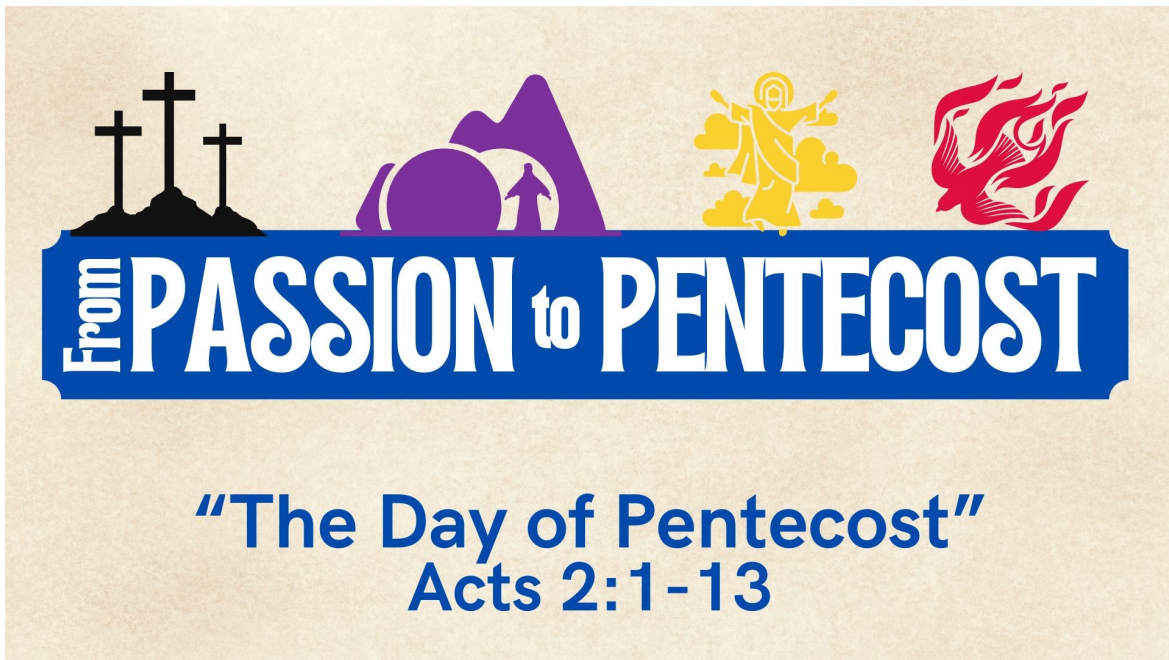




MAPLE PLAIN  
COMMUNITY  
CHURCH



**A PLACE TO CONNECT**

CONNECT WITH GOD.

CONNECT WITH OTHERS.

CONNECT OTHERS WITH GOD.

**MAY 19, 2024**

# SUNDAY KIDS MINISTRIES



## NURSERY (Ages 0-2)

**This Week (5/19):**

LuAnn Vassar  
Jasmine Vineyard

9:00am

LuAnn Vassar  
Jasmine Vineyard

10:15am

Elsa Eitreim

**Next Week (5/26):**

Terry Skreen  
Boni Fadden

Terry Skreen  
Whit Pieper



## CHILDREN'S CHURCH (Ages 3-5)

**Dismissed at 10:30am Worship Service**

**This Week (5/19):**

Roger Stundahl  
Donna Stundahl  
Quinn Pieper

**Next Week (5/26):**

Carolynn Stave  
Addie Beam



## CONNECTIONS HOUR

**9:00 - 10:00am (Ages 3 - Grade 12)**

Classes split by age group for an age relevant Bible lesson & time of singing.



## K4J (Ages K - 4th Grade)

**Dismissed at 10:30am Worship Service**

**This Week (5/19):**

Matthew Gilbertson  
Quinn Gilbertson

**Next Week (5/26):**

Alexis Eidum, Allison Steinke  
Haven Torgerson, Mandy Broda

# MIDWEEK KIDS MINISTRIES

MAPLE PLAIN COMMUNITY CHURCH  
TODDLER & PREK



ON SUMMER BREAK WITH THE  
FOLLOWING MEETING DATES:

TUESDAY, JUNE 4, JULY 23, AUGUST 20  
9:30 AM - 11:00 AM



## ROOTS KIDS CLUB

(Pre K-5th Grade)

Wednesdays at 6:30-7:30pm

Register online now!

On break for the summer.

Resumes September 11th!



# STUDENT MINISTRIES



## Youth Group Grades 7-12

Connections Hour, Sundays at 9:00am  
Youth Group, Wednesdays at 7:00pm

### SUNDAY, MAY 19

3:00 PM Sundae Tour Bike Ride + Ice Cream

### WEDNESDAY, MAY 22

6:30 PM End of School Year Celebration  
Bonfire + Lawn Games

### SUNDAY, JUNE 2

10:15 AM Graduation Sunday at MPCC

### WEDNESDAY, JUNE 5

7:00 PM Bible Study + Hang Out

### WEDNESDAY, JUNE 12

6:00 PM Slip N Slide Kickball + Grill Out

# CONNECTION GROUPS

## YOUNG ADULTS GROUP

Sundays at 7:00pm, Semi-Weekly

Meets on Sunday, May 19<sup>th</sup>.

Connect with Phil Eidum for more info,

[peidum@mapleplaincc.org](mailto:peidum@mapleplaincc.org)

## WOMENS BIBLE STUDIES

On break for summer.

## MENS BIBLE STUDIES

Thursdays at 6:00am: On break for summer.

Thursdays at 7:00pm in the Conference Room

The Book of Titus. Led by Carl Borg.

Email [cborg3414@gmail.com](mailto:cborg3414@gmail.com) for more details.

More information at: [www.mapleplaincc.org/groups](http://www.mapleplaincc.org/groups)  
or contact Chris Steinke at: [csteinke@mapleplaincc.org](mailto:csteinke@mapleplaincc.org)

# CALENDAR

## THIS WEEK

### SUNDAY, MAY 19

8:30 AM Corporate Prayer  
9:00 AM Connections Hour  
10:15 AM Worship Service  
3:00 PM Sundae Bike Tour  
7:00 PM Young Adult Prayer Group

### TUESDAY, MAY 21

3:30 PM C.E. Meeting

### WEDNESDAY, MAY 22

6:30 PM Summit: End of School Year  
Celebration Bonfire + Lawn Games

### THURSDAY, MAY 23

7:00 AM West Metro Community Prayer  
at Village Church  
7:00 PM Men's Bible Study

## NEXT WEEK

### SUNDAY, MAY 26

8:30 AM Corporate Prayer  
9:00 AM Connections Hour  
10:15 AM Worship Service

### TUESDAY, MAY 28

7:00 PM Missions Committee Meeting

### THURSDAY, MAY 30

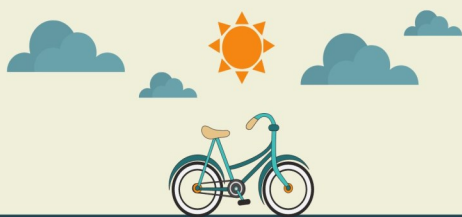
7:00 AM West Metro Community Prayer  
at Christ Lutheran Church

## UPCOMING EVENTS

### YOUTH PASTOR SEARCH

MPCC is excited about the growth in our children's & youth ministries! To meet the expanding ministry needs, MPCC leadership has proposed adapting Pastor Phil's role into "Family Life Pastor" and hiring a new Youth Pastor. The MPCC Search Committee is now looking for a passionate candidate to guide the next generation to connect deeply with Jesus! For information on the job posting, please visit [www.mapleplaincc.org/careers](http://www.mapleplaincc.org/careers).

Please join us in spreading the word to qualified candidates and be in prayer for this search process!



## SUNDAE BIKE TOUR

**SUNDAY, MAY 19 3:00PM**

Meet @ MPCC and the ride the Baker Park Trail.  
Ice Cream Sundaes to follow.

## & ANNOUNCEMENTS

### VOLUNTEER OPPORTUNITY— FMSC MOBILE PACK

MPCC member Micah Benway is helping sponsor a Feed My Starving Children mobile pack event through his work to pack 100,000 (!!) meals for children who are hungry around the world! If you would like to volunteer (all ages welcome), MPCC has registered for spots to pack on Tuesday, June 18<sup>th</sup> from 1pm-3pm at Hope Academy (2300 Chicago Ave. Minneapolis). Contact Pastor Phil ([peidum@mapleplaincc.org](mailto:peidum@mapleplaincc.org)) to register!

### MEMORIAL DAY SLIDESHOW

We will have a slideshow honoring our veterans during the worship service on May 26<sup>th</sup> (Memorial Day Weekend). If you have served and would like to be included in this presentation, please email [info@mapleplaincc.org](mailto:info@mapleplaincc.org) with a picture (current or service time) the branch of military you served in and the years that you served.

## MAY

19 Sundae Tour Bike Ride, 3pm

## JUNE

2 Graduation Sunday

18 FMSC Mobile Pack

23 MN Adult & Teen Challenge + Potluck



# MAPLE PLAIN COMMUNITY CHURCH

## MPCC STAFF

### Dominic Broda

Lead Pastor  
[dbroda@mapleplaincc.org](mailto:dbroda@mapleplaincc.org)

### Chris Steinke

Associate Pastor of Worship & Discipleship  
[csteinke@mapleplaincc.org](mailto:csteinke@mapleplaincc.org)

### Phil Eidum

Pastor of Student Ministries & Young Adults  
[peidum@mapleplaincc.org](mailto:peidum@mapleplaincc.org)

### Stephanie Klaers

Director of Kids' Ministry  
[sklaers@mapleplaincc.org](mailto:sklaers@mapleplaincc.org)

### Kimberly Gilbertson

Office Manager  
[kgilbertson@mapleplaincc.org](mailto:kgilbertson@mapleplaincc.org)

### Office Hours

Monday-Thursday  
9:00am-3:00pm

## CALENDAR YEAR GIVING

	<u>GENERAL</u>	<u>MISSIONS</u>
Annual Budget	\$453,658	\$115,000
YTD Income	\$133,632	\$33,161
YTD Expenses	\$140,656	\$37,200
Net Revenue/Expenses	-\$7,024	-\$4,039

\* As of April 30, 2024



## ONLINE GIVING

[WWW.MAPLEPLAINCC.ORG/GIVE](http://WWW.MAPLEPLAINCC.ORG/GIVE)

## ATTENDANCE

Last Week (5/12) Attendance: 194  
April 2024 Average: 206 (including Easter 3/31)  
April 2023 Average: 209 (including Easter)

## CONNECT

1815 Budd Avenue, Maple Plain, MN 55359  
763-479-1620  
[info@mapleplaincc.org](mailto:info@mapleplaincc.org)  
[www.mapleplaincc.org](http://www.mapleplaincc.org)



## MISSIONARY UPDATE:

### Brandon + Kristi Kosse

### Location: Austria

Happy May, praying friends!

The past month was a busy one, but we are delighted to share new praises with you, and a few prayer requests, too! Thank you so much for covering our family in prayer and celebrating all God is doing in and around us!

#### PRAISES:

-It was a joy to see Brandon again, after a month apart. Though my first couple weeks back in the US were mainly spent at Mayo Clinic, we were also able to share at 3 partner churches, reconnect with numerous family and friends, and attend to logistics for Nikayla's wedding.

-Ethan and Elena fared well back in Vienna, in spite of missing us and handling some challenges. We are so proud of them for braving a month on their own!

-Brandon successfully finished his first semester of his Masters! He has gleaned a lot from his time so far, building his counseling skills.

-Mayo was very helpful, for Brandon and myself! I was given tools for my incontinence issues, and will plan to have a hysterectomy in a year or so, due to extensive fibroids/Endometriosis. Brandon's back is also on the mend through physical therapy and cortisone injections.

-Numerous gifts have come in to lighten medical bills and extra expenses from our time at Mayo. A heartfelt thank you to everyone who has blessed is in this way!

#### PRAYERS:

-Continued prayer for Brandon with multiple responsibilities (visits to more partner churches, a summer school intensive course in South Carolina, etc.), and all of us during these times of family separation.

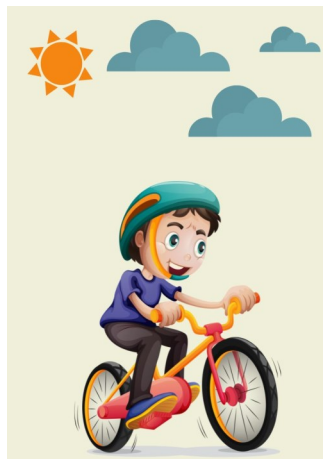
-Prayer as we plan for a wedding in August, Ethan joining the US Army hopefully this fall, and travels throughout the summer (Ethan, Elena, and I head to the US June 15; Nikayla and Tyler will arrive June 28.)

-We are at about 94% of our missionary funding, rejoicing that we are up from 89%!

-Medical bills are continuing to come in from Mayo; please pray for continued provision in handling these costs.

Excited to be home with our beautiful kiddos again!

With grateful hearts,  
Kristi, Branson, and family



## KIDS SUNDAE BIKE TOUR

# SUNDAY, MAY 19 3:00PM

Trail too long? Bring your bike & decorate it for a special bike parade and bike course at the MPCC Parking Lot!

*Adult supervision required!*