



MAPLE PLAIN
COMMUNITY
CHURCH



A PLACE TO CONNECT

CONNECT WITH GOD.

CONNECT WITH OTHERS.

CONNECT OTHERS WITH GOD.

MAY 11, 2025

SUNDAY KIDS MINISTRIES



NURSERY (Ages 0-2)

This Week (5/11):

Caroline McCoy
Terry Skreen

Next Week (5/18):

LuAnn Vassar
Jasmine Vineyard



CHILDREN'S CHURCH (Ages 3-5)

Dismissed at 10:30am Worship Service

This Week (5/11):

Carolynn Stave
Kaitlyn Klaers

Next Week (5/18):

Donna Stundahl
Kirsten Biener
Quinn Pieper

10:15am

Caroline McCoy
Terry Skreen
Maddie McCoy
Beckett McCoy

LuAnn Vassar
Jasmine Vineyard
Lisa Sheets
Elsa Gilbertson
Elsa Eitrem



CONNECTIONS HOUR

9:00 - 10:00am (Ages 3 - Grade 12)

Classes split by age group for an age relevant Bible lesson & time of singing.



K4J (Ages K - 4th Grade)

Dismissed at 10:30am Worship Service

This Week (5/11):

Randy Mason
Martha Mason

Next Week (5/18):

Matt Gilbertson
Kimberly Gilbertson

MIDWEEK KIDS MINISTRIES

MAPLE PLAIN COMMUNITY CHURCH
TODDLER & PREK



ON BREAK UNTIL SEPTEMBER



ROOTS KIDS CLUB

(Pre K-5th Grade)

Wednesdays at 6:30-7:30pm

Register online now!

On Break Until September



STUDENT MINISTRIES



Youth Group Grades 6-12

Connections Hour, Sundays at 9:00am
Youth Group, Wednesdays at 6:00pm

WEDNESDAY, MAY 7

Summit Youth Group
Middle 6-8pm / High 7-9pm
High: Missions Trip Parent's Meeting 6pm in Fellowship Hall

FRIDAY, MAY 9

High: Mystery Party
7-10pm, Western themed & dress "in character"

WEDNESDAY, MAY 14

Summer Worship & Testimony Night
7-9pm
Middle: Missions Trip Parent's Meeting 6pm in Fellowship Hall

SATURDAY, MAY 17

Summer Trip Fundraiser: Yard Work Spring Cleaning
9am-4pm, Dress in work clothes

SUNDAY, MAY 18

All Church Event: Sundae Tour Bike Ride, 3-4:30pm

CONNECTION GROUPS

YOUNG ADULTS GROUP

Sundays at 7:00pm, Semi-Weekly

Meets on Sunday, May 18th.

Connect with Phil Eidum for more info,

peidum@mapleplaincc.org

WOMENS BIBLE STUDIES

Mondays at 6:30pm in the Fellowship Hall

On Break

Tuesdays at 7:30pm Online via Zoom

On Break

MENS BIBLE STUDIES

Wednesdays at 6:00am in the Fellowship Hall

Led by Pastor Dominic Broda

Thursdays at 7:00pm in the Conference Room

On Break

More information at: www.mapleplaincc.org/groups
or contact Chris Steinke at: csteinke@mapleplaincc.org

CALENDAR

THIS WEEK

SUNDAY, MAY 11

8:30 AM Corporate Prayer
9:00 AM Connections Hour
10:15 AM Worship Service

TUESDAY, MAY 13

6:00 PM Elder + Trustee Board Meetings

WEDNESDAY, MAY 14

6:00 AM Men's Bible Study
6:00 PM Summit MS: Parent's Meeting
7:00 PM Summit Worship + Student Testimony Night

THURSDAY, MAY 15

7:00 AM West Metro Community Prayer at The Highlands Church

FRIDAY, MAY 16

7:00 AM Men's Prayer Breakfast

SATURDAY, MAY 17

9:00 AM Summit Fundraiser: Yard Work

NEXT WEEK

SUNDAY, MAY 18

8:30 AM Corporate Prayer
9:00 AM Connections Hour
10:15 AM Worship Service
3:00 PM Sundae Tour Bike Ride + Ice Cream
7:00 PM Young Adult Prayer Group

WEDNESDAY, MAY 21

6:30 PM Summit End-of-School Year Celebration Bonfire

THURSDAY, MAY 22

7:00 AM West Metro Community Prayer at Watertown E-Free

UPCOMING EVENTS

&

ANNOUNCEMENTS

MAY

- 18 BABY DEDICATION SUNDAY
- 19 SUNDAE TOUR BIKE RIDE + ICE CREAM

JUNE

- 9-11 FMSC MOBILE PACK
- 18 ALL-CHURCH GRILL OUT
- 22 MN TEEN CHALLENGE + POTLUCK

MEMORIAL DAY SLIDESHOW

We will have a slideshow honoring our veterans during the worship service on May 25th (Memorial Day Weekend). If you have served and would like to be included in this presentation, please email info@mapleplaincc.org with a picture (current or service time), the branch of military you served in and the years that you served.

GROUP LESSONS: HARMONY 101

WHAT WILL BE COVERED: Vocal Warmup + Range Exercises, Basics in Vocal Harmonies, Practicing Harmonies Together.

DATES: Wednesdays, May 28 + June 11, 6-7pm in the Sanctuary. Ages 12+. Contact Kayla Anderson for more info.

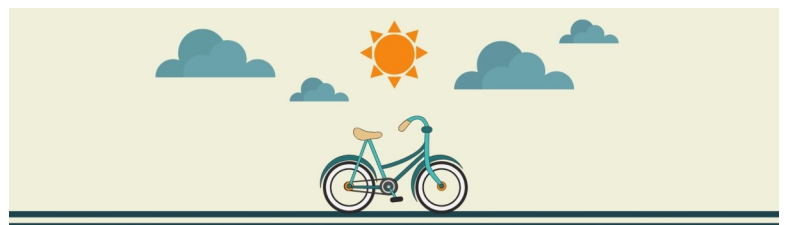
ms.kayla.anderson@gmail.com

Feed My Starving Children, Mobile Pack 2025, Come Join Us!

Registration: <https://give.fmssc.org/hopeacademy>

Where: Hope Academy, Minneapolis

When: June 9th –11th



SUNDAE BIKE TOUR

SUNDAY, MAY 18 3:00PM

Meet @ MPCC and we will ride the Baker Park Trail.
Ice Cream Sundaes to follow.



MAPLE PLAIN COMMUNITY CHURCH

MPCC STAFF

Dominic Broda

Lead Pastor

dbroda@mapleplaincc.org

Chris Steinke

Associate Pastor of Worship & Discipleship

csteinke@mapleplaincc.org

Phil Eidum

Family Life Pastor

peidum@mapleplaincc.org

Josh Brandon

Pastor of Student Ministries & Young Adults

jbrandon@mapleplaincc.org

Stephanie Klaers

Director of Kids' Ministry

sklaers@mapleplaincc.org

Kimberly Gilbertson

Office Manager

kgilbertson@mapleplaincc.org

Office Hours

Monday-Thursday

9:00am-3:00pm

CALENDAR YEAR GIVING

GENERAL

Annual Budget	\$627,567
YTD Income	\$160,076
YTD Expenses	\$201,138
Net Revenue/Expenses	-\$41,062

* As of April 30, 2025



ONLINE GIVING

WWW.MAPLEPLAINCC.ORG/GIVE

ATTENDANCE

Last Week (5/4) Attendance: 175

April 2025 Average: 235

April 2024 Average (without Easter): 181

CONNECT

1815 Budd Avenue, Maple Plain, MN 55359

763-479-1620

info@mapleplaincc.org

www.mapleplaincc.org



MISSIONARY UPDATE:

Dwight + Mary Kay Martin

LOCATION: Thailand

Dear Maple Plain Community Church,

The enduring wisdom of the Parable of the Sower finds a powerful echo in our current AFT church planter results, as revealed by Kaptrack data. Let this connection inspire and encourage you.

Over the past seven years, dedicated church planters from the Association of Free Churches in Thailand have sown seeds of the Gospel across the highways and byways of seven provinces of Thailand, reaching at least 130,000 individuals. :

- **The Hardened Path** Over 30,000 people heard the Word but the seed landed on the roadside. External forces prevented it from taking root, they rejected the gospel yielding no lasting fruit. Another 100,000 have responded to the gospel, falling onto one of these soils:

- **The Rocky Soil:** 60% (60,000) have received the message with initial joy, yet for one reason or other we have not been able to disciple them. It lacked deep roots and when challenges arose, their faith never grew.

- **The Thorny Ground:** 10% (10,000) embraced the message and attend church, but worldly anxieties and desires have choked their spiritual growth, hindering maturity and have not desired to be baptized..

- **The Fertile Ground:** 30% (30,000) sincerely embraced the Word and are being diligently disciplined. They have been baptized, and are now bearing fruit through sharing the gospel with varying levels of impact from a hundredfold to smaller amounts.

This seven-year harvest underscores the enduring truth of Jesus' teaching: the receptivity of the human heart determines the fruitfulness of the sown Word. While challenges persist, the dedicated efforts of AFT continue to cultivate fertile ground, bringing forth a tangible harvest for the Kingdom of God in Thailand.

Thank you for being a faithful patron of the AFT and supporting us through your prayers and resources.

Blessings In Jesus Christ,

Dwight Martin

President of the eSTAR Foundation

President of the Association of Free Churches in Thailand

Family BBQ
Monday
5:30 pm

TRUE NORTH
Trusting Jesus in a Wild World

VBS 2025
Monday, July 21 – Thursday, July 24
6:30 pm – 8:30 pm
Ages 3 – Grade 5