



MAPLE PLAIN
COMMUNITY
CHURCH



A PLACE TO CONNECT

CONNECT WITH GOD.

CONNECT WITH OTHERS.

CONNECT OTHERS WITH GOD.

MAY 18, 2025

SUNDAY KIDS MINISTRIES



NURSERY (Ages 0-2)

This Week (5/18):

LuAnn Vassar
Jasmine Vineyard

Next Week (5/25):

No Connections Hour



CHILDREN'S CHURCH (Ages 3-5)

Dismissed at 10:30am Worship Service

This Week (5/18):

Donna Stundahl
Kirsten Biener
Quinn Pieper

Next Week (5/25):

Carolynn Stave
Addie Beam

10:15am

LuAnn Vassar
Jasmine Vineyard
Lisa Sheets
Elsa Gilbertson
Elsa Eitrem

Leesa Anderson
Boni Fadden
Whit Pieper



CONNECTIONS HOUR

9:00 - 10:00am (Ages 3 - Grade 12)

Classes split by age group for an age relevant Bible lesson & time of singing.



K4J (Ages K - 4th Grade)

Dismissed at 10:30am Worship Service

This Week (5/18):

Matt Gilbertson
Kimberly Gilbertson

Next Week (5/25):

Allison S, Mandy B
Haven T

MIDWEEK KIDS MINISTRIES

MAPLE PLAIN COMMUNITY CHURCH
TODDLER & PREK



ON BREAK UNTIL SEPTEMBER



ROOTS KIDS CLUB

(Pre K-5th Grade)

Wednesdays at 6:30-7:30pm

Register online now!

On Break Until September



STUDENT MINISTRIES



Youth Group Grades 6-12

Connections Hour, Sundays at 9:00am
Youth Group, Wednesdays at 6:00pm

SUNDAY, MAY 18

All Church Event: Sundae Tour Bike Ride
3-4:30pm

WEDNESDAY, MAY 21

End of School-Year Celebration Bonfire + Lawn Games
6:30-9pm

WEDNESDAY, MAY 28

No Summit
Summer Break Start

SUNDAY, JUNE 1

Graduation Sunday at MPCC
10:15am

WEDNESDAY, JUNE 4

Bible Study + Hang Out
7-9pm

MS: Mission Trip Meeting in Youth Room, 6-7pm

CONNECTION GROUPS

YOUNG ADULTS GROUP

Sundays at 7:00pm, Semi-Weekly

Meets on Sunday, May 18th.

Connect with Phil Eidum for more info,

peidum@mapleplaincc.org

WOMENS BIBLE STUDIES

Mondays at 6:30pm in the Fellowship Hall

On Break

Tuesdays at 7:30pm Online via Zoom

On Break

MENS BIBLE STUDIES

Wednesdays at 6:00am in the Fellowship Hall

On Break

Thursdays at 7:00pm in the Conference Room

On Break

More information at: www.mapleplaincc.org/groups
or contact Chris Steinke at: csteinke@mapleplaincc.org

CALENDAR

THIS WEEK

SUNDAY, MAY 18

8:30 AM	Corporate Prayer
9:00 AM	Connections Hour
10:15 AM	Worship Service
3:00 PM	Sundae Tour Bike Ride + Ice Cream
7:00 PM	Young Adult Prayer Group

WEDNESDAY, MAY 21

6:30 PM	Summit End-of-School Year Celebration Bonfire
---------	--

THURSDAY, MAY 22

7:00 AM	West Metro Community Prayer at Watertown E-Free
---------	--

NEXT WEEK

SUNDAY, MAY 25

9:30 AM	Corporate Prayer
10:15 AM	Worship Service
	No Connections Hour

TUESDAY, MAY 27

6:00 PM	Elder Q&A
7:00 PM	Missions Committee Meeting

WEDNESDAY, MAY 28

6:00 PM	Group Lessons: Harmony 101
---------	----------------------------

THURSDAY, MAY 29

7:00 AM	West Metro Community Prayer at Redemption Hills
---------	--

UPCOMING EVENTS

MAY

18	SUNDAE TOUR BIKE RIDE + ICE CREAM
----	-----------------------------------

JUNE

9-11	FMSC MOBILE PACK
18	ALL-CHURCH GRILL OUT
22	MN TEEN CHALLENGE + POTLUCK

ELDER Q&A ON LEADERSHIP CODE OF CONDUCT

At the Q1 Congregational Meeting in April, the congregation approved a motion for the Elders to host a Q&A panel to receive feedback on the Leadership Code of Conduct document. This Q&A will take place on Tuesday, May 27, from 6:00–6:50pm in the Fellowship Hall. All are welcome to attend and share their thoughts.

Feed My Starving Children, Mobile Pack 2025, Come Join Us!

Registration: <https://give.fmsc.org/hopeacademy>

Where: Hope Academy, Minneapolis

When: June 9th –11th



&

ANNOUNCEMENTS

MEMORIAL DAY SLIDESHOW

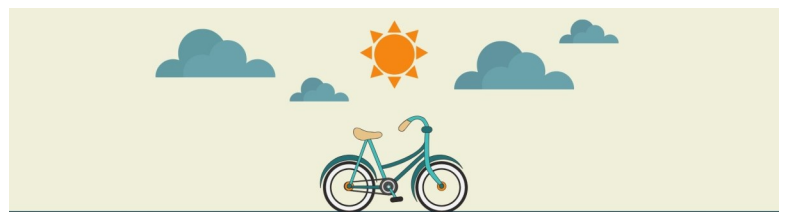
We will have a slideshow honoring our veterans during the worship service on May 25th (Memorial Day Weekend). If you have served and would like to be included in this presentation, please email info@mapleplaincc.org with a picture (current or service time), the branch of military you served in and the years that you served.

GROUP LESSONS: HARMONY 101

WHAT WILL BE COVERED: Vocal Warmup + Range Exercises, Basics in Vocal Harmonies, Practicing Harmonies Together.

DATES: Wednesdays, May 28 + June 11, 6-7pm in the Sanctuary. Ages 12+. Contact Kayla Anderson for more info.

ms.kayla.anderson@gmail.com



SUNDAE BIKE TOUR

SUNDAY, MAY 18 3:00PM

Meet @ MPCC and we will ride the Baker Park Trail.
Ice Cream Sundaes to follow.



MAPLE PLAIN COMMUNITY CHURCH

MPCC STAFF

Dominic Broda

Lead Pastor

dbroda@mapleplaincc.org

Chris Steinke

Associate Pastor of Worship & Discipleship

csteinke@mapleplaincc.org

Phil Eidum

Family Life Pastor

peidum@mapleplaincc.org

Josh Brandon

Pastor of Student Ministries & Young Adults

jbrandon@mapleplaincc.org

Stephanie Klaers

Director of Kids' Ministry

sklaers@mapleplaincc.org

Kimberly Gilbertson

Office Manager

kgilbertson@mapleplaincc.org

Office Hours

Monday-Thursday

9:00am-3:00pm

CALENDAR YEAR GIVING

GENERAL

Annual Budget	\$627,567
YTD Income	\$160,076
YTD Expenses	\$201,138
Net Revenue/Expenses	-\$41,062

* As of April 30, 2025



ONLINE GIVING

WWW.MAPLEPLAINCC.ORG/GIVE

ATTENDANCE

Last Week (5/11) Attendance: 204

April 2025 Average: 235

April 2024 Average (without Easter): 181

CONNECT

1815 Budd Avenue, Maple Plain, MN 55359

763-479-1620

info@mapleplaincc.org

www.mapleplaincc.org



MISSIONARY UPDATE:

JONATHAN + CHIEKO REASONER

LOCATION: JAPAN (RECENTLY RETIRED)

Thank you for praying for us during the month of March while we were in Japan. Our schedule was full and we met with many people, usually over a meal.

One of the most important events was to lead the burial service for Pastor Iwai on March 15. The Iwai family, church elders and some others gathered at the grave site for a hope filled time of remembrance and burial, almost exactly one year after Pastor Iwai died of pancreatic cancer. We remembered him and felt grief as those who DO have hope. The church is making good progress in their preparation to call a new pastor.

What a special time we had at the Retirement Thanksgiving Reception held for us at The North Church in Mounds View, MN on April 26! There was a simple program including worship hymns, a short media presentation covering our time in Japan (close to 40 years), and some meaningful remarks given by special people. Dr. John Piper gave the final prayer and benediction. And afterwards there was a light luncheon. The Lord has greatly blessed us through many of His people and we are grateful to Him!

On April 29, we were able to close on the purchase of a townhouse located in Mounds View, MN! In early April we found a house, put in an offer, and then spent much of the month sending in paperwork and getting approved for a loan. This is the very first house we have ever owned in our 45 years of marriage. It is just a little bit exciting.

This prayer update will be the last one for a while. We officially retired from SEND International on March 31. We often are asked what we will do now. First, we plan to get settled. And we will be praying and considering various requests and possibilities for ministry that have come our way already. In short, we want to wait on the Lord.

We will try to write again to give an update at the end of this year. But at this point...we cannot THANK YOU enough for "following" us and praying for us each month for so many years! You have been partners with us and the Lord has indeed blessed us through you.

So gratefully yours,

Jonathan + Chieko

